

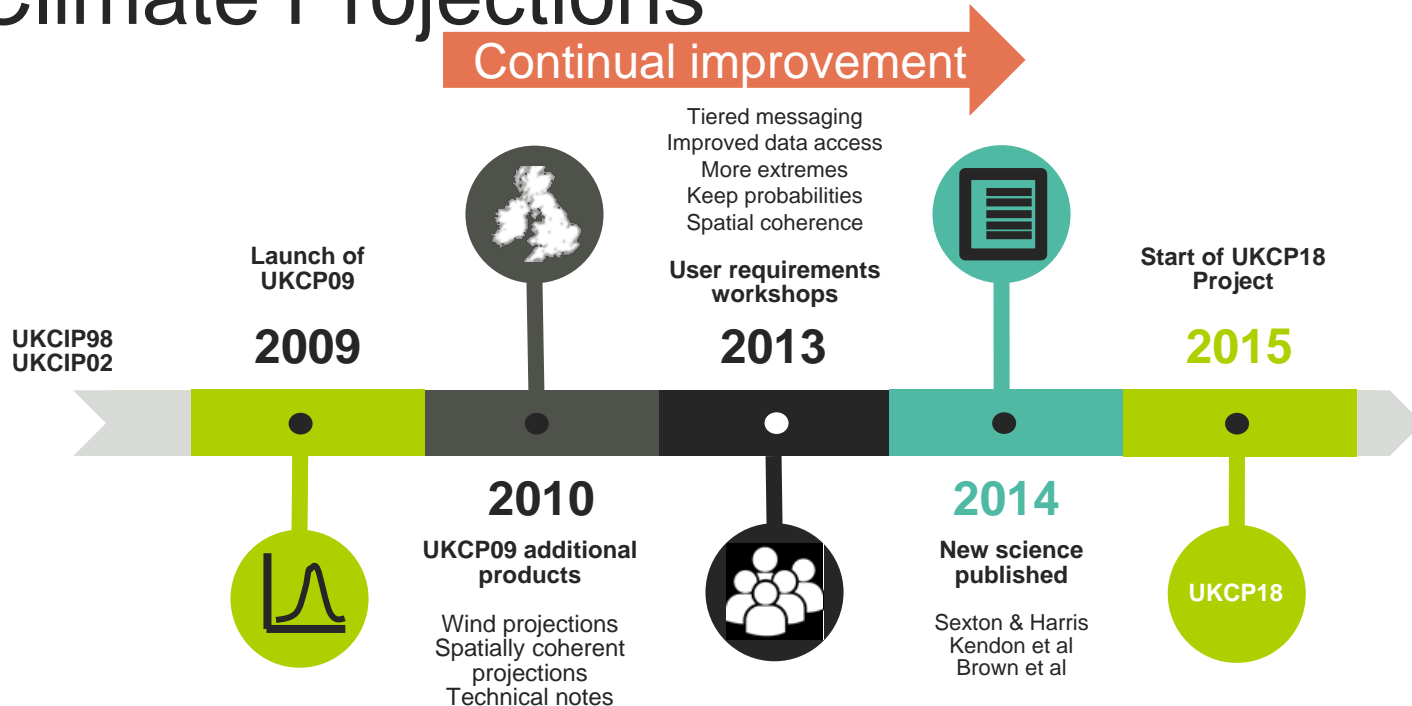
Co-development of national projections: the UKCP18 experience so far

ClimateEurope webinar on user interaction during the development of national climate scenarios

18 April 2018

Fai Fung, Jason Lowe, James Murphy, Matt Palmer, Mark McCarthy and UKCP team

UK Climate Projections





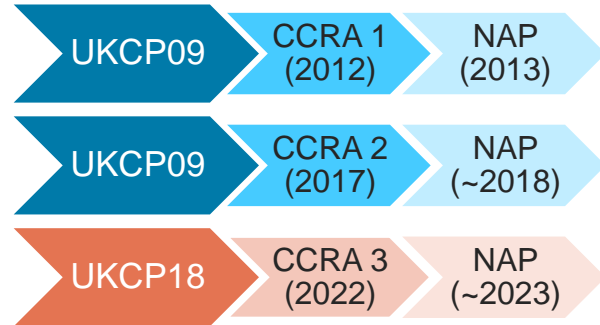
UK Climate Projections

Science

- Improved models, new observations, faster supercomputers
- In the meantime, UKCP09 continues to be valid for adaptation planning. Info from CMIP5 should be used alongside UKCP09 for summer rainfall.

Policy

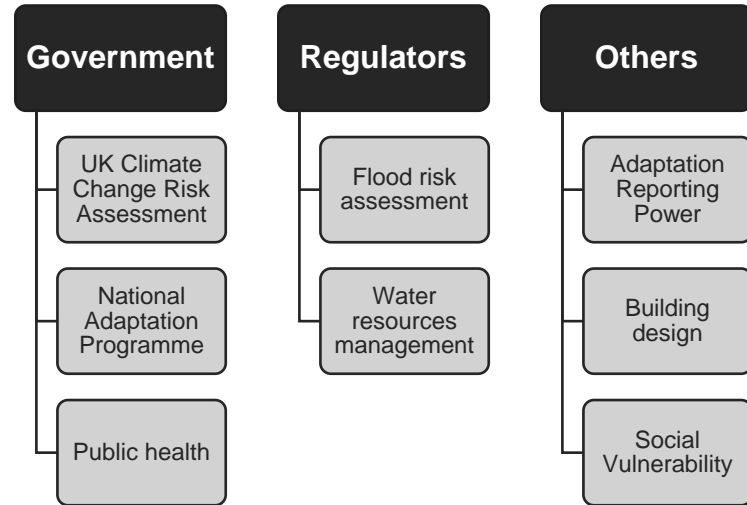
- To help inform the third **Climate Change Risk Assessment** (due Jan 2022) and refresh of the **National Adaptation Programme** (2023)



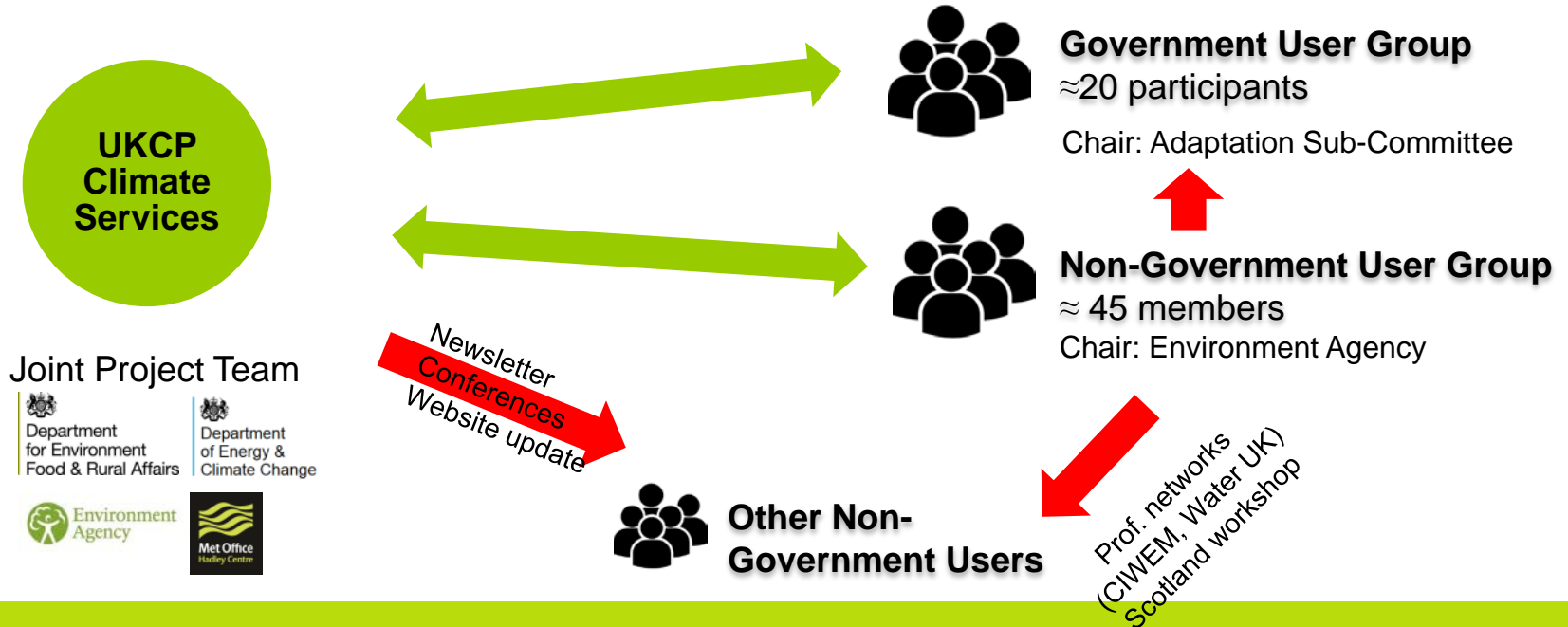
The audience for UKCP18

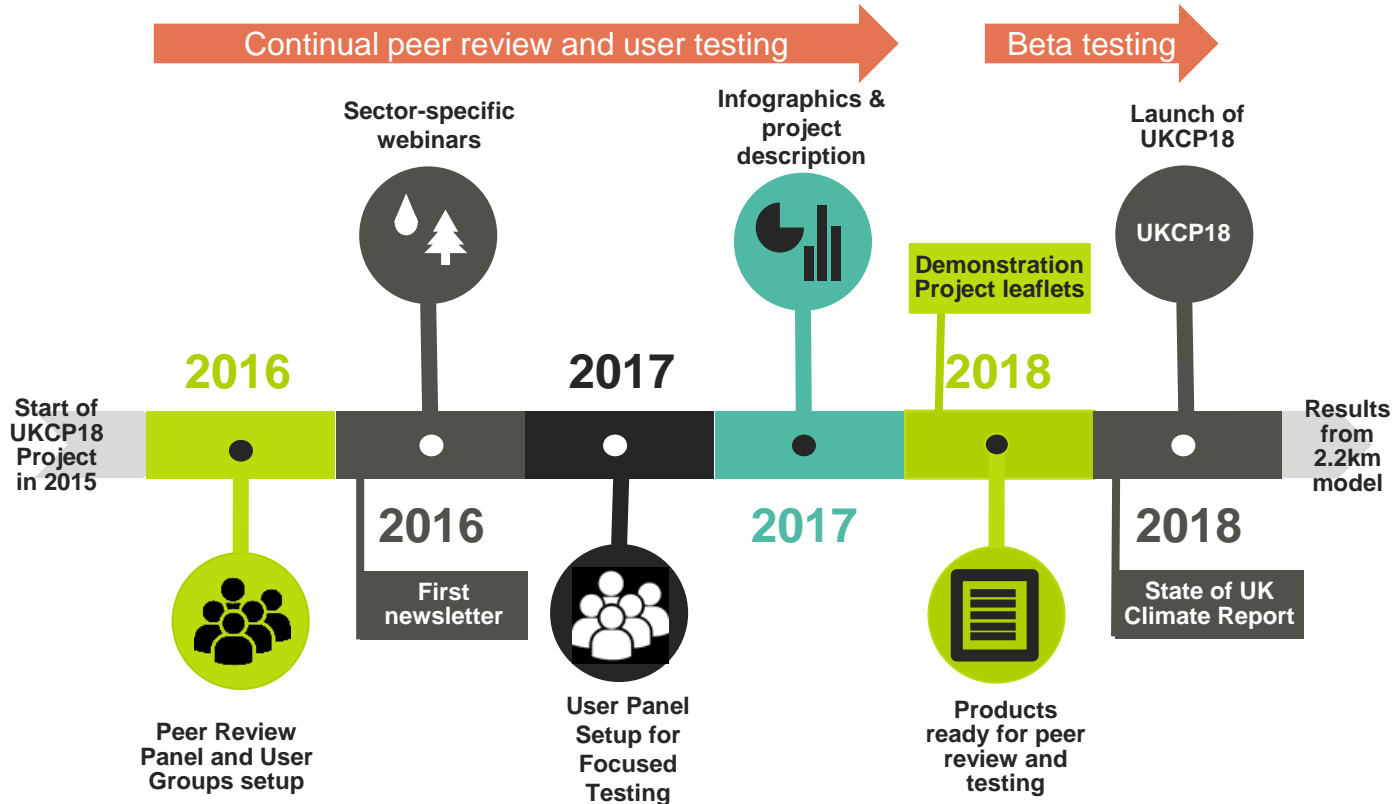


Examples where UKCP09 used as a basis for climate risk assessments



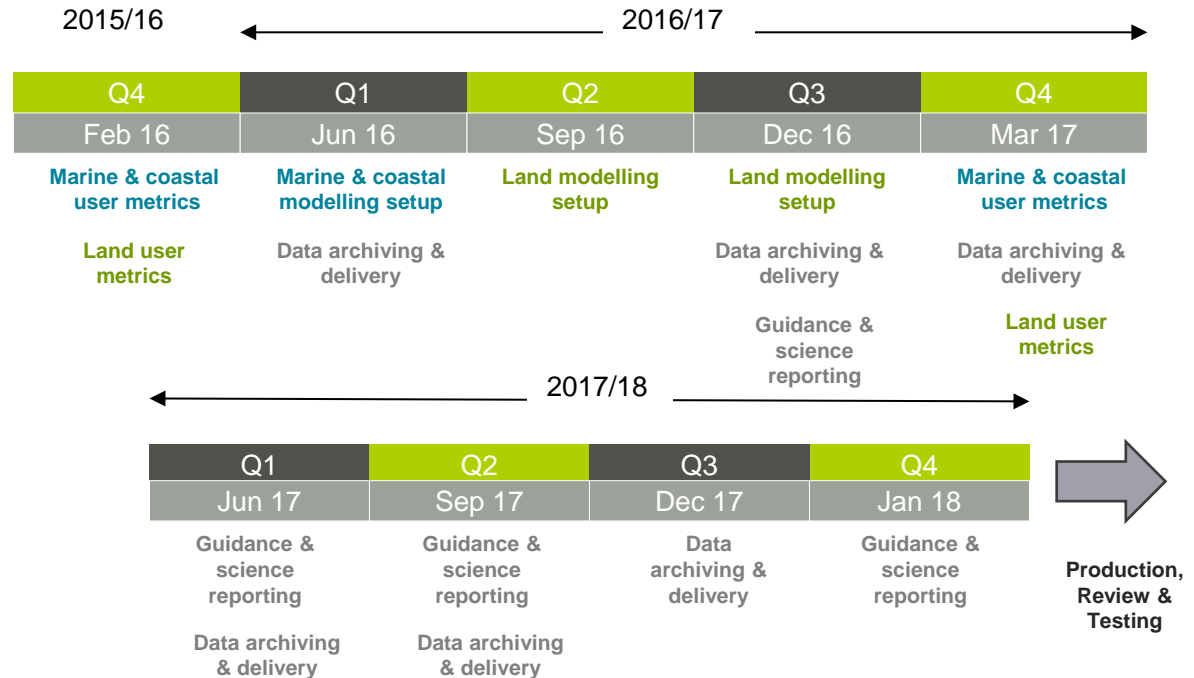
Engaging the Audience for UKCP18





Project decision timeline

- Marine and coastal user metrics
- Marine and coastal modelling setup
- Land user metrics
- Land modelling setup
- Data archiving and delivery
- Guidance and science reporting

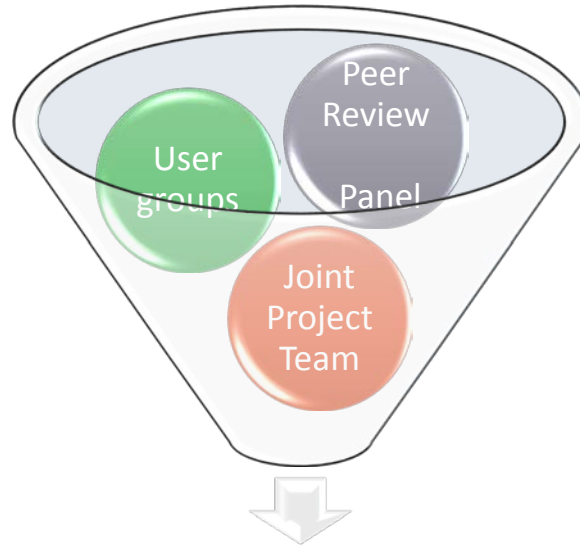




How are decisions made that shape the UKCP18 project?

Influence of each group
dependent on decision type

Scientific integrity must be
maintained



Governance Board: Project decision

Demonstration Projects



Application of UKCP18 outputs for water resources planning and drought risk assessment for the UK water industry



Yorkshire Climate Change Risk Assessment



UNIVERSITY OF LEEDS

Use of high resolution climate projections for sub daily rainfall within national scale pluvial flood hazard maps



Effect of UKCP18 data on models of climate and weather information for the analysis of building thermal and energy performance at design stage.



Risk assessment of tree species suitability to climate change using Ecological Site Classification



Coastal Sensitivity to Climate Change Projections



Thanks

For more information please contact

 www.metoffice.gov.uk

 ukcpproject@metoffice.gov.uk