



**Climate forecast
enabled knowledge
services**

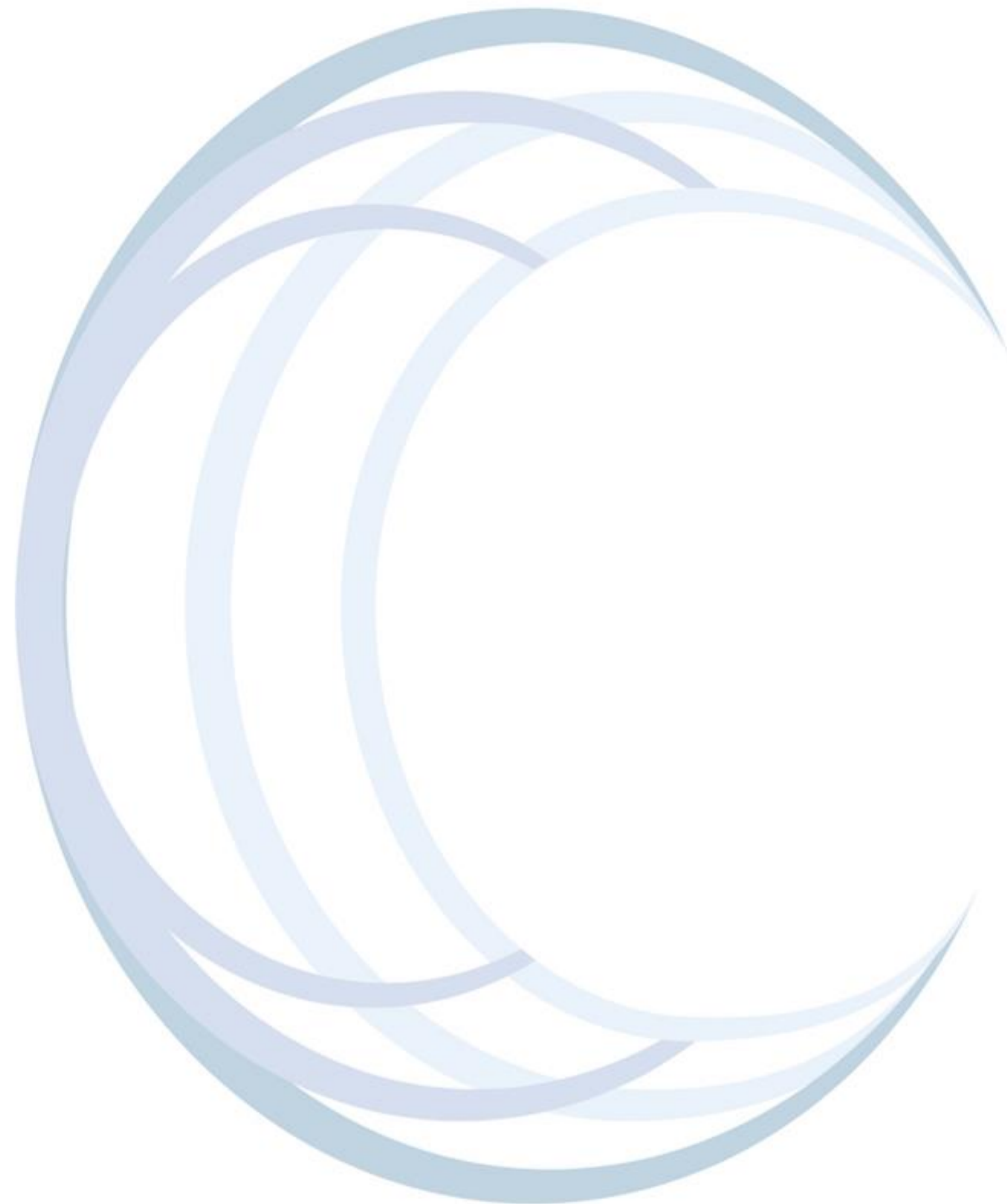
CLARA Services

Carolina Cantone (SMHI)

Christiana Photiadou (SMHI)



CLARA GRANT AGREEMENT N° 730482



CLARA Services

Water Resources Management

PWA (ARPAE)

AQUA (SMHI)

ROAT (UCO)

Disaster Risk Reduction

FLOOD-MAGE (CMCC)

Air Quality

AIRCLOUD (SMHI, APERTUM)

AQCLI (ARPAE)

Renewable Energy Production

SCHT (GECOSistema)

SHYMAT (UCO)

GWh (SMHI)

SEAP (UCO)

Horizontal Services

PPDP (TCDF)

CLIME (CMCC)

Agriculture

WRI (ARPAE)

IRRCLIME (GECOSistema)

15 services dealing with:

- climate projections
- seasonal forecasting
- decadal forecasting
- emissions

6 Institute involved in service development

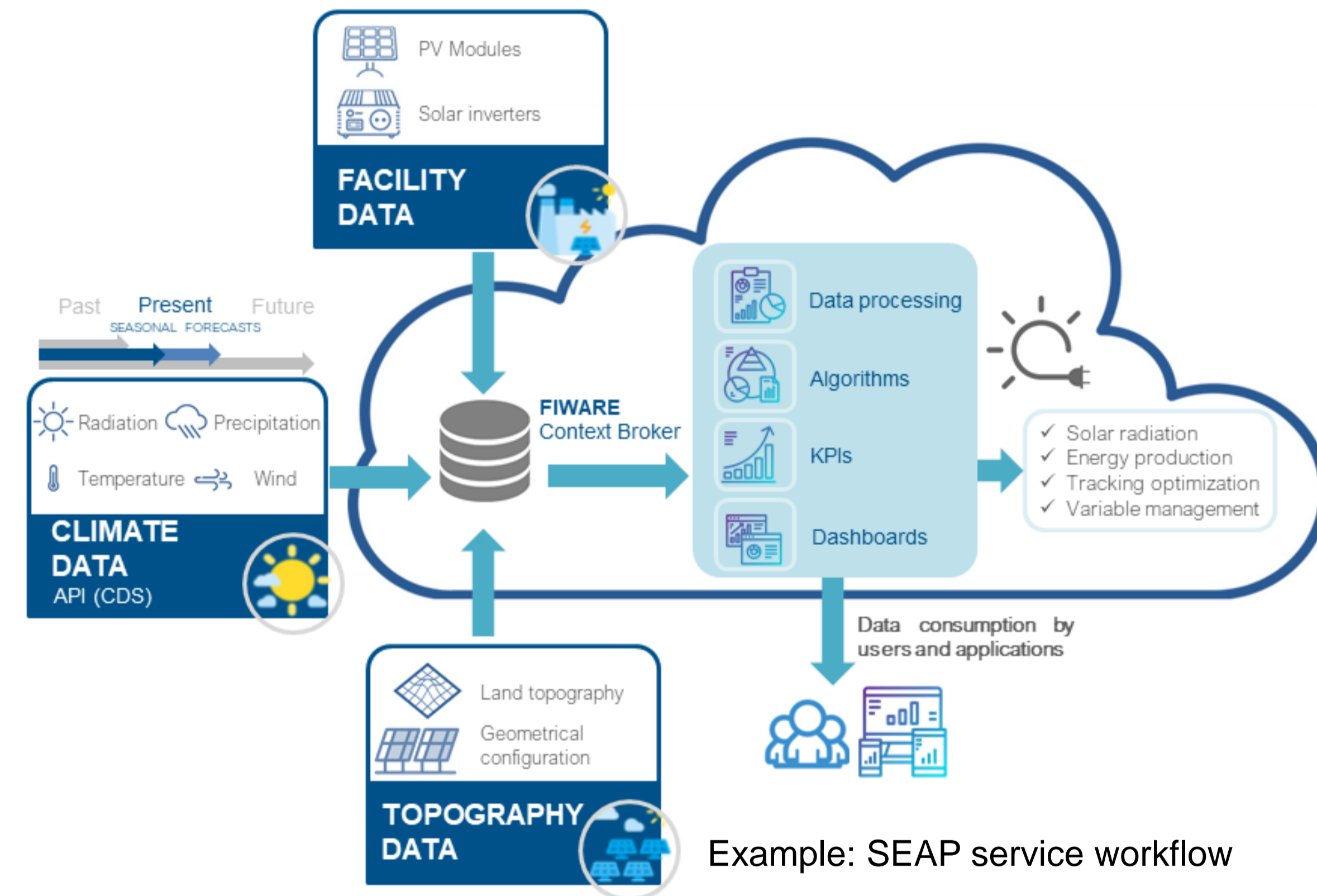
Across 5 categories of societal issues



CLARA Services

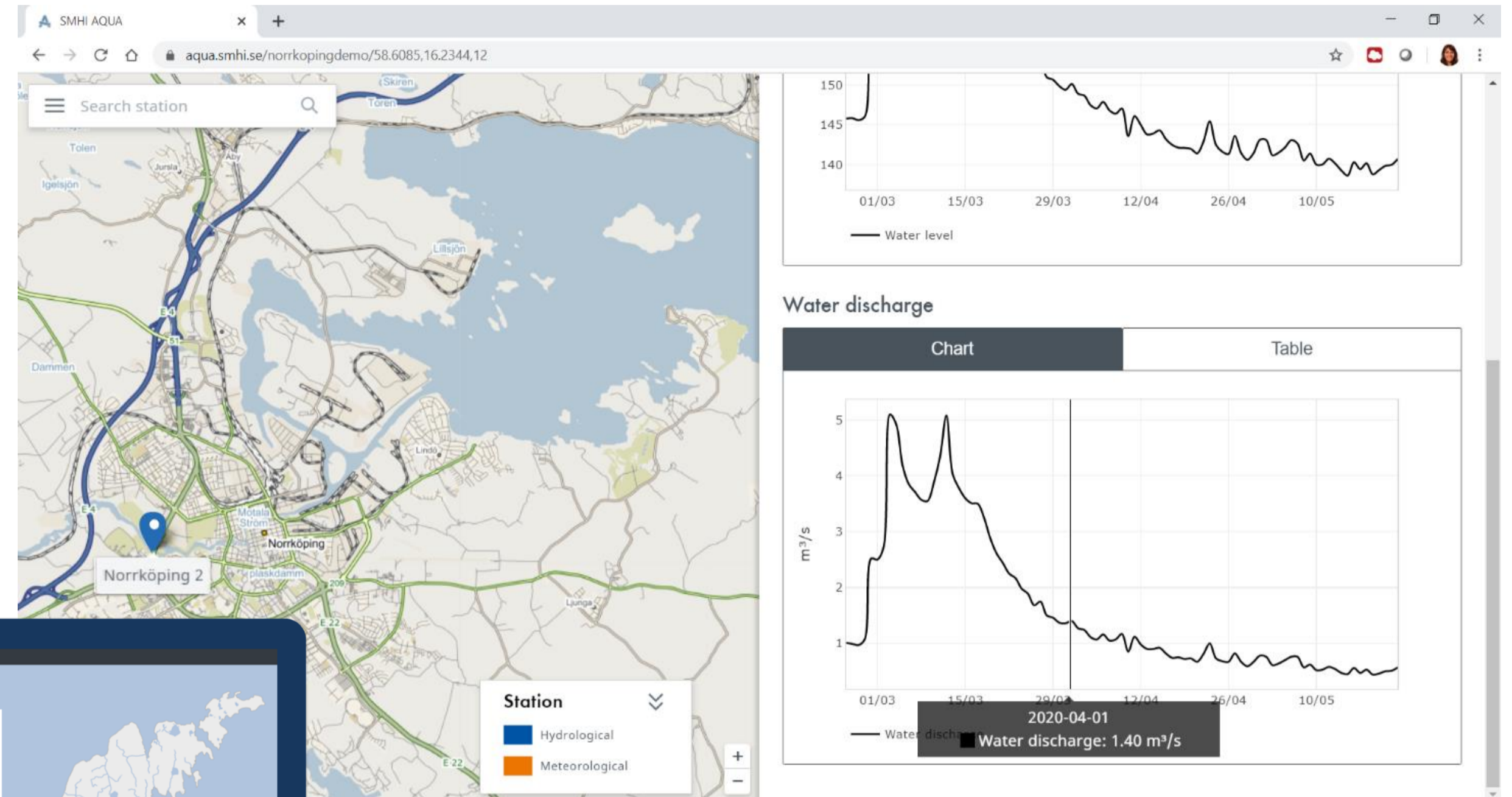
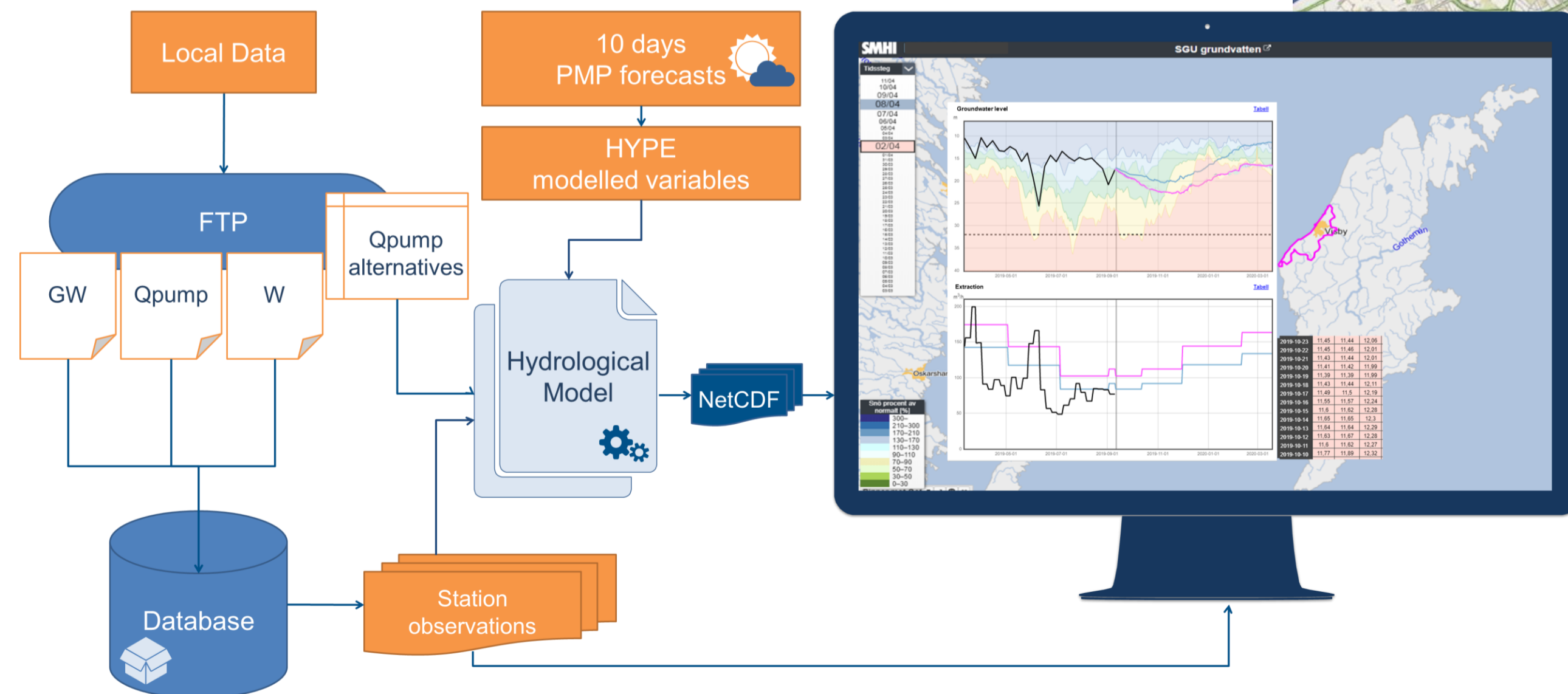
Development focusing on:

- Co-creation with developers, users and User community (MUF)
- Selling points and management issues addressed – BM4CS
- Innovative aspects and features
- Data, impact model, methods
- Working prototype (access and functionality)
- Value assessment of services




CLARA Services – two examples from SMHI

AQUA Water supply assessment tool



CLARA Services – two examples from SMHI

Hydro GWh Prediction



Reports

Spot

96 quarters

72 hours

15 days

45 days

Balancing

Hydrology

REMIT

Active messages

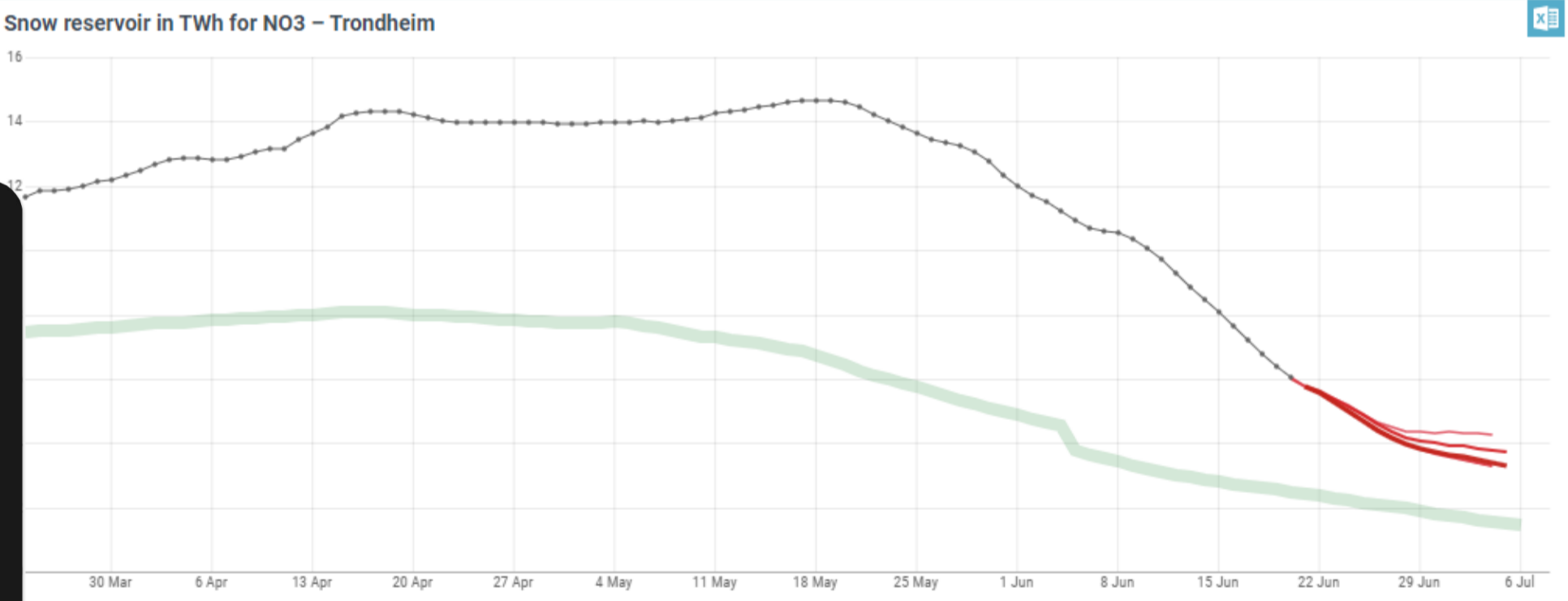
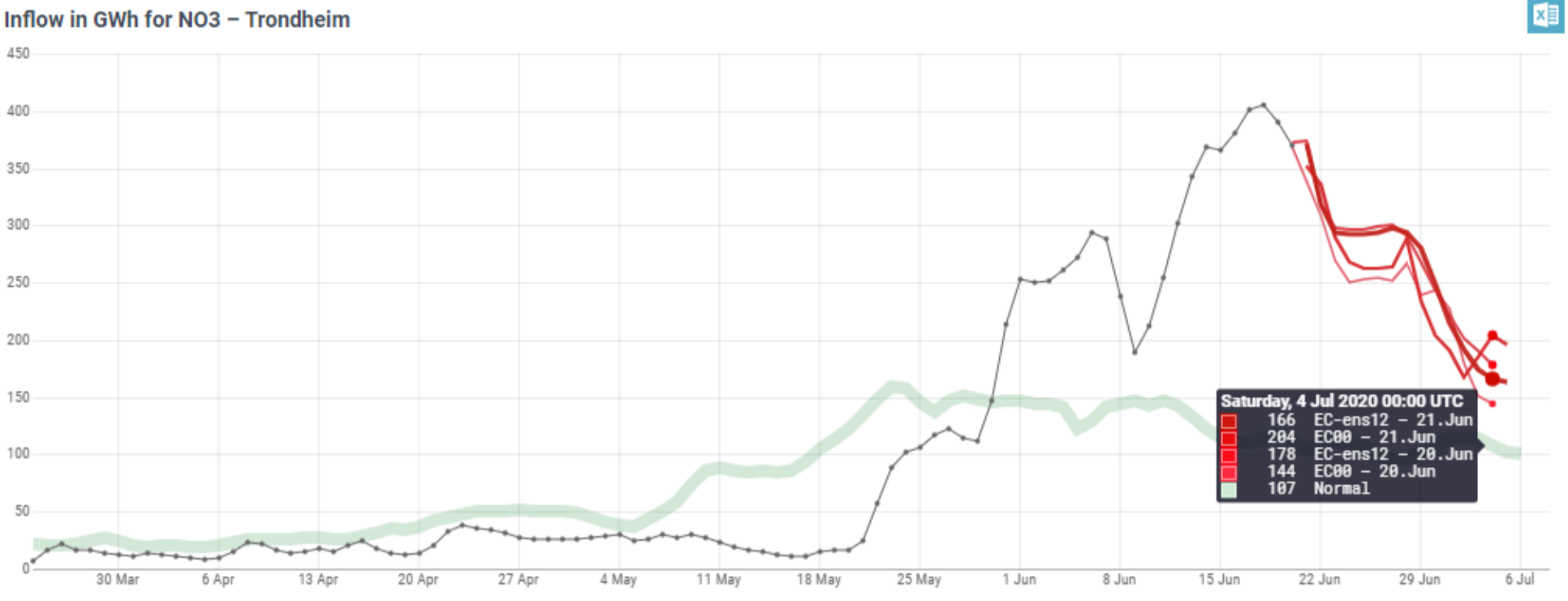
Capacity/production

River Temp

Browse data

Data search

Local forecasts

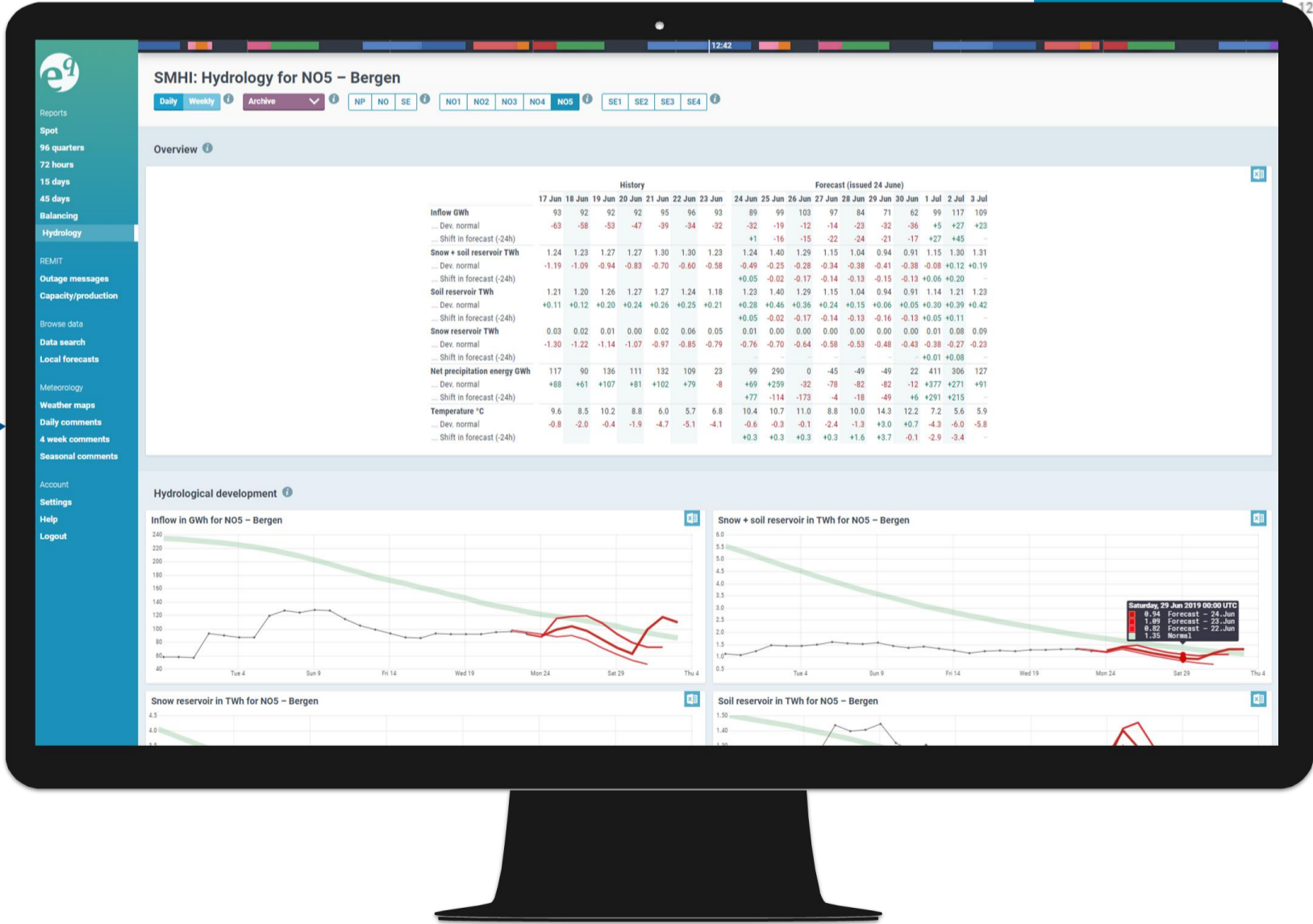


15 day ECENS forecasts

GWh Model
(based on
E-HYPE)

Files to EQ

Hydro Power
Production
Observations



Thank you for your attention.

carolina.cantone@smhi.se

christiana.photiadou@smhi.se

The CLARA project has received funding from the European Union's Horizon 2020 research and innovation programme under the Grant Agreement No 730482.

