



Solutions to improve climate resilience of small and medium-sized municipalities

Majana Heidenreich

TU Dresden, Chair of Meteorology



Introduction

Climate change poses a fundamental threat to our society and our well-being. Climate change impacts cause high costs and threaten the municipal services of general interest.

Despite national adaptation strategies, the final adaptation to climate change takes place mainly at the municipal level.

All municipalities have to be enabled to fulfill this task. Therefore we need to arrive at a level of understanding of their administrative, legal and financial situation.

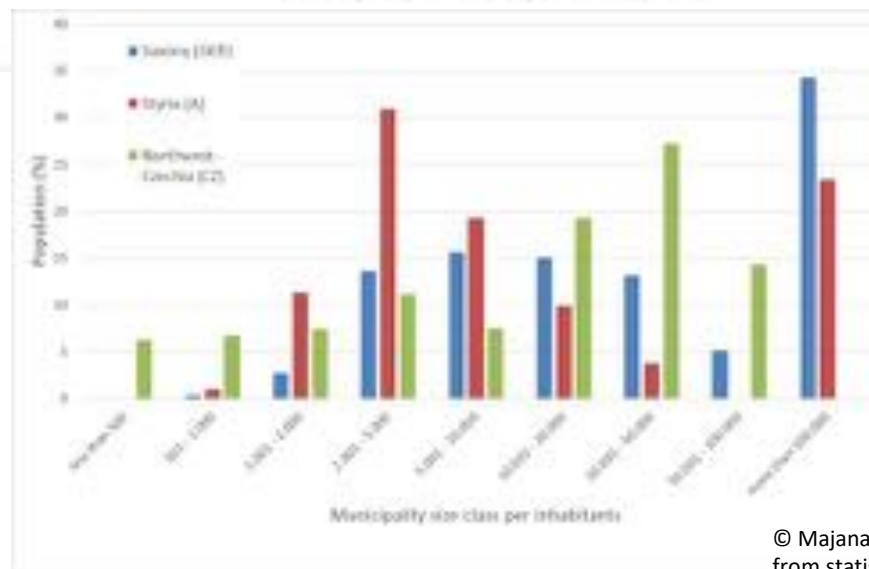
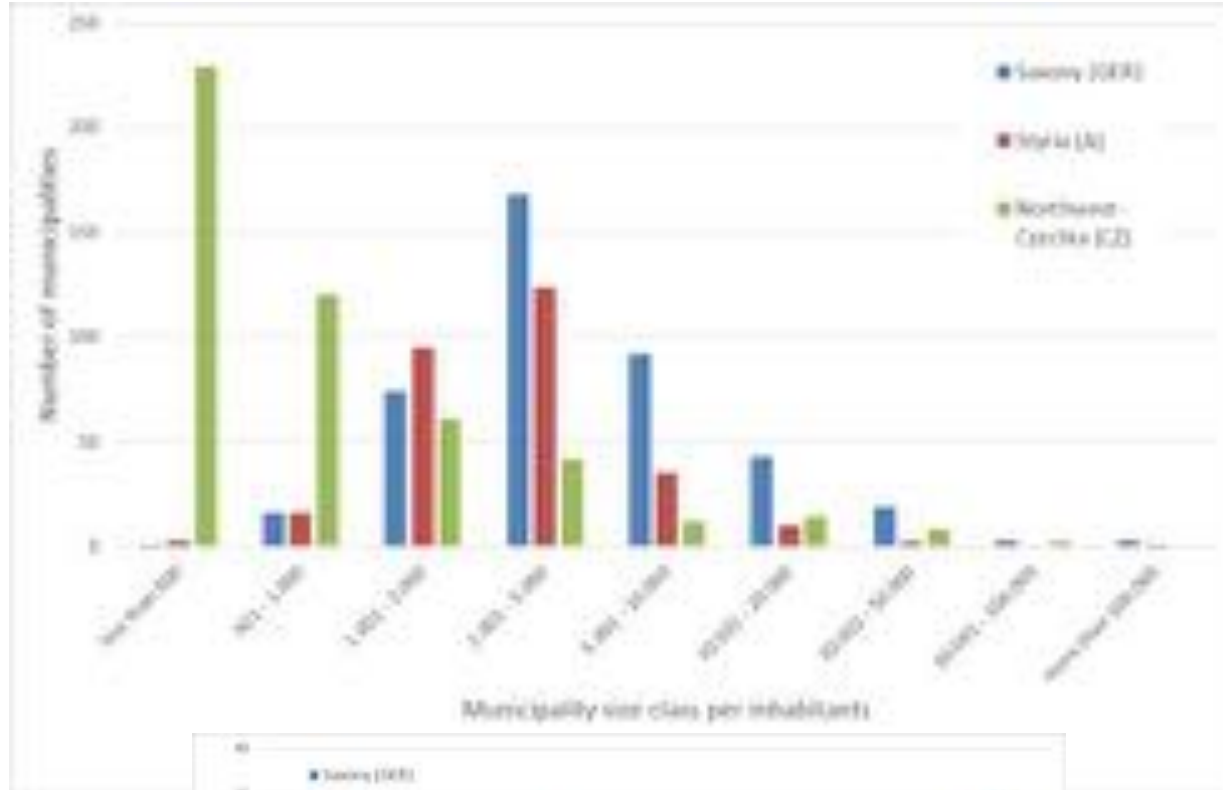


Situation

In Europe, there are at least 800 cities with more than 50.000 inhabitants¹ but thousands of small and medium sized municipalities.

For the 3 project regions:
99 % of all municipalities have less than 50.000 inhabitants and 60 - 86 % of the population live in these municipalities.

¹⁾ Netherlands Environmental Assessment Agency, 2016



© Majana Heidenreich, data from statistical offices

Situation

limited awareness of climate change impacts in small and medium sized municipalities

confined administration capacities without experts or specialised departments

lack of personnel and financial capacities to additionally integrate climate change adaptation into their administrative practice and to implement necessary measures.

insufficient expert knowledge on climate change

lack of identification of threats at local level

lack of strategies

The Idea

Application for a project

1. to improve data base and information on CC, the impacts, CCA and to enhance the knowledge of municipalities
2. to integrate CCA into the administrative work of local authorities
3. to implement specific measures of CCA in close cooperation with the municipalities

Focus on small and medium-sized municipalities!



LIFE LOCAL ADAPT

Integration of climate change into the work of local authorities

EU LIFE programme

July 2016 – June 2021

3 Regions + Valka

6 Partners

Coordinating Beneficiary

Technische Universität Dresden

Associated Beneficiaries

Climate Service Center Germany

Provincial Government of Styria

Saxon State Agency for Environment, Agriculture
and Geology

Czech Globe - Global Change Research Institute

Valka Municipality Council



<https://www.life-local-adapt.eu/en/>

Solutions/products of LIFE LOCAL ADAPT

1. Consulting
climate coaches

2. Financial
support
contests

3. Information
material
fact sheets

4. Public
relations
workshops

5. Climate
information
systems
ReKIS, CzechAdapt

6. Best practice
examples

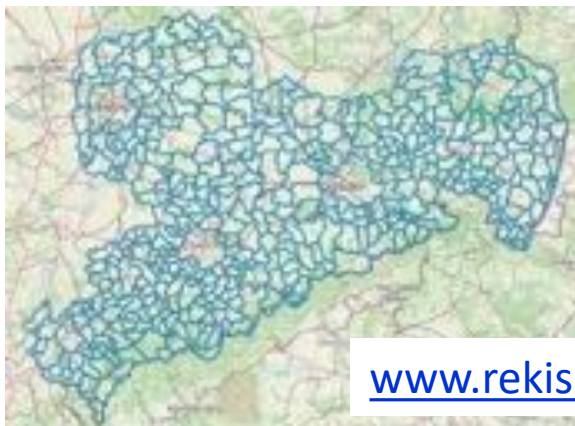
Climate information system - ReKIS

Regional climate information system
interactive tool to provide climate
data and information about CCA
financed by and for the federal
states Saxony, Thuringia and Saxony-
Anhalt

Implementation by TUD

kommunal

Saxony by LIFE LOCAL ADAPT



www.rekis.org



Information material Fact sheets

measures and recommendations for CCA

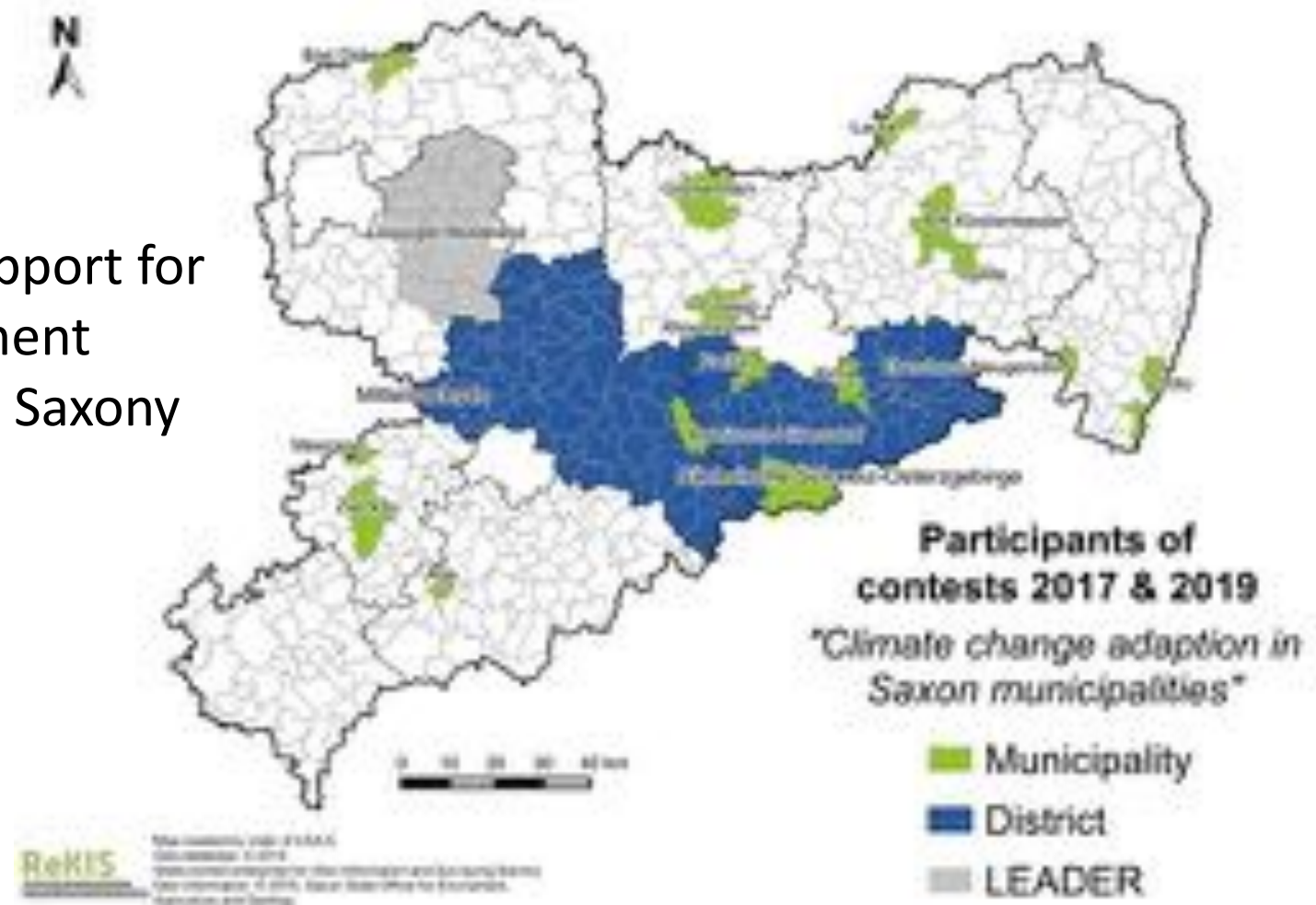
heavy rain, heat stress, erosion, health, green infrastructure, funding in German, English and Czech

short and easy to understand; as a starting point for adaptation



Contest for Municipal Climate Adaptation in Saxony

Financial support for
non-investment
measures in Saxony



Workshops and Consulting

Up to now 47 workshops and 50 meetings with municipalities
for improvement of municipal
knowledge on CC and CCA
for development of adaptation
strategies and plans



© Czech Globe



© LfULG



© Prov. Government Styria



© Valka

Best practices examples

Promoted by the project

As examples for other municipalities

For instance:

Bad Dübener See Adaptation concept for
green infrastructure - facade and roof
greening

Zwickau Site-specific plant lists with
climate-resilient tree species and planning
of irrigation options with rainwater



© City Zwickau

Experiences of LIFE LOCAL ADAPT

Consulting and personal contact is very important.

A single solution, such as a web platform, is not sufficient
different offers.

Permanent contact person in the municipality is necessary.

Engagement is mainly triggered by real impacts/extreme events.

Support from LLA is welcome no costs. But CCA has still low
priority.

Often no distinction between climate protection and adaptation

Measures with direct impact are preferred short vs long term.

Experiences of LIFE LOCAL ADAPT

CC (long term and abstract) often displaced by other concrete current problems unemployment, demographic change,

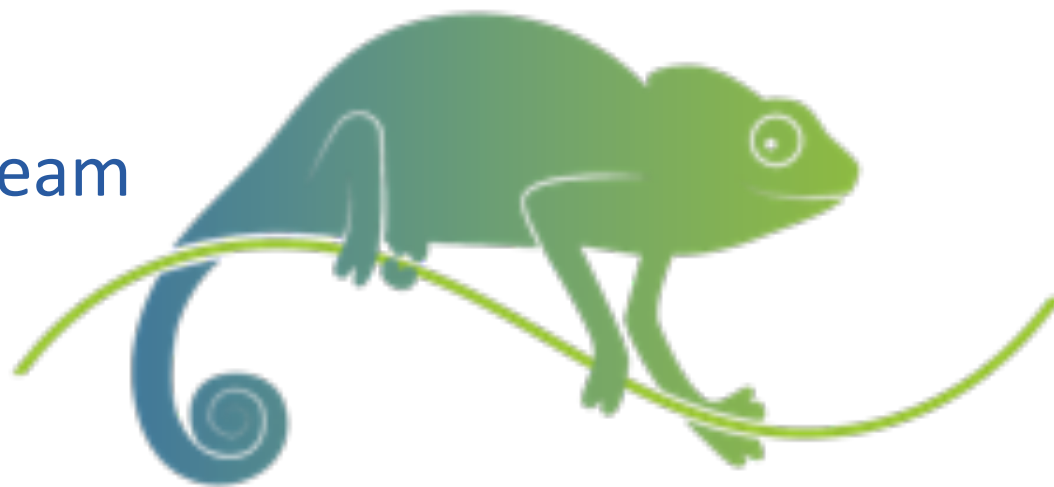
Recommendations on CCA are not binding enough
improvement of legal basis.

Administrative structures influence climate adaptation.

Information, services and funding measures from National and European level do not fit to small and medium sized municipalities sufficiently.

Potential barriers: language, scale, complexity, requirements

Thanks to the project team and for your attention!



TUD: Ch. Bernhofer (Coordinator),
M. Heidenreich, B. Köstner, I. Schmidt
Styria: A. Gössinger-Wieser, B. Fischer, A. Weiland
GKSS-GERICS: J. Cortekar, T. Weber
Czech-Globe: H. Duchková, L. Suchá
LfULG: D. Rumpf, M. Straková
Valka: J. Putnina, I. Aleksejeva